



GAT MONTHLY MEMBERSHIP PROGRESS REPORT

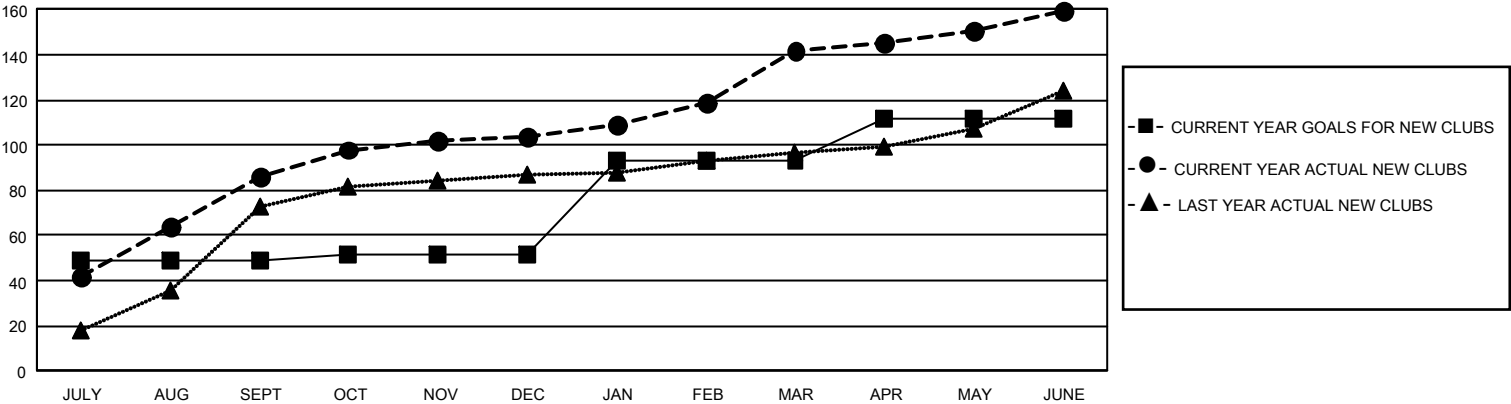
Results as of: 6/30/2025

GMT Constitutional Area 6 - I, Group J

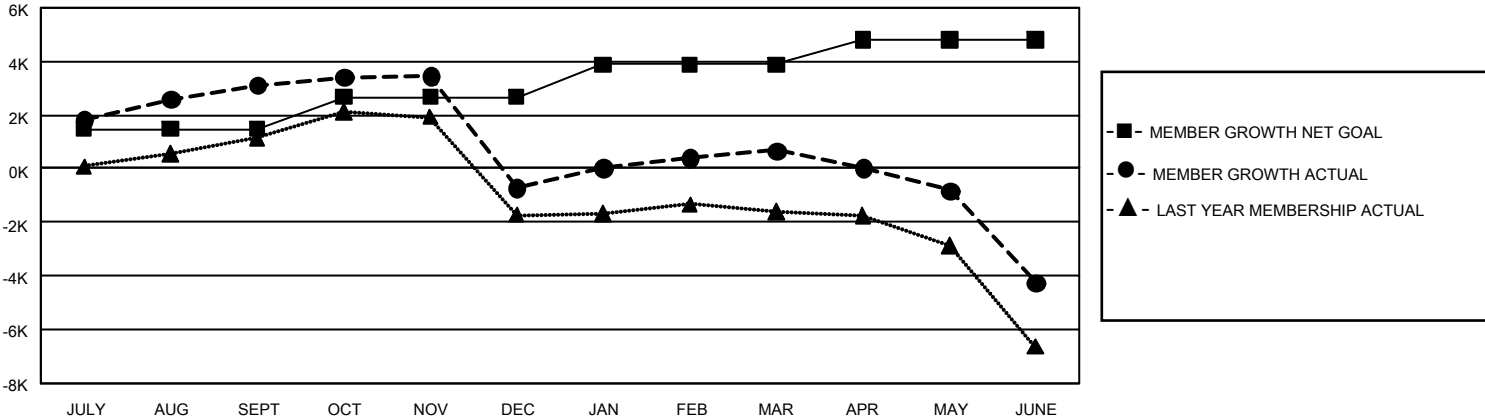
REPORT DOES NOT INCLUDE CLUBS IN UNDISTRICTED AREAS.

Clubs				Members			
RESULTS FOR 2024-2025				RESULTS FOR 2024-2025			
QUARTER	NEW CLUB GOAL	NEW CLUBS	DROPPED CLUBS	QUARTER	MEMBER GROWTH NET GOAL	MEMBER GROWTH ACTUAL	DROPPED MEMBERS ACTUAL (including transfers)
JULY/AUG/SEPT	147	86	9	JULY/AUG/SEPT	1485	5,053	1,614
OCT/NOV/DEC	9	18	139	OCT/NOV/DEC	1190	1,590	5,296
JAN/FEB/MAR	123	38	21	JAN/FEB/MAR	1214	3,248	978
APR/MAY/JUNE	57	17	30	APR/MAY/JUNE	926	2,612	6,940

GOALS AND ACTUAL NEW CLUBS CUMULATIVE



GOALS AND ACTUAL MEMBERS CUMULATIVE



DROPPED CLUBS: 199		1,314 CLUBS OF 1,930 ADDED 1 OR MORE NEW MEMBERS	<u>GENDER DISTRIBUTION</u>	
<u>DROPPED MEMBERS</u> DECEASED 232 CLUB CANCELLED 3,944 OTHER 10,617 <hr/> TOTAL 14,793			MALE 46,751 (81.93%)	
			FEMALE 10,300 (18.05%)	
			NON BINARY 2 (0.00%)	
			PREFER NOT TO ANSWER 6 (0.01%)	
		CLICK HERE FOR CUMULATIVE MEMBERSHIP DATA	TOTAL FAMILY UNIT MEMBERS 14,253	
			FAMILY MEMBERS PAYING HALF DUES 8,495	